

DC6-180(6V180Ah)



Specification

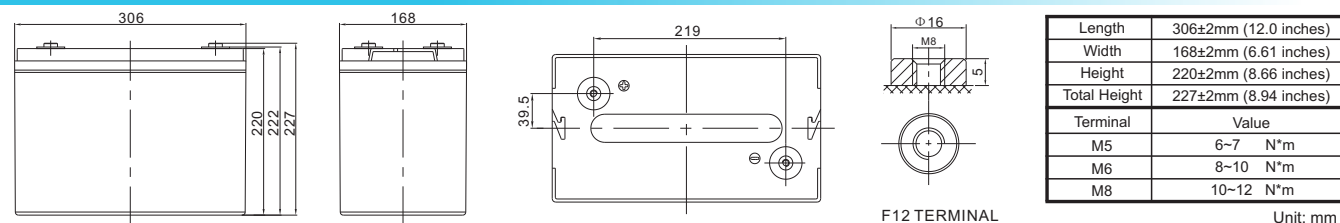


DC (Deep Cycle) series batteries provide superior high integrity and reliability. It is specially designed for frequent cyclic charge and discharge. By using strong grids, thick plate and specially active material are designed for repeated deep-discharge applications. The DC series batteries offers 30% more cyclic life than the standby series. It is suitable for solar and wind renewable energy storage, mobility and medical equipment, RV, telecom, broadband and cable TV, UPS systems etc.



Cells Per Unit	3
Voltage Per Unit	6
Capacity	180Ah@20hr-rate to 1.75V per cell @25°C
Weight	Approx. 26.5 Kg (Tolerance ±2%)
Internal Resistance	Approx. 3 mΩ
Terminal	F12(M8)
Max. Discharge Current	1800A (5 sec)
Design Life	12 years (floating charge)
Maximum Charging Current	54.0 A
Reference Capacity	C3 132.3Ah C5 150.5Ah C10 171.0Ah C20 180.0Ah
Float Charging Voltage	6.80 V~6.90 V @ 25°C Temperature Compensation: -3mV/°C/Cell
Cycle Use Voltage	7.30 V~7.40 V @ 25°C Temperature Compensation: -4mV/°C/Cell
Operating Temperature Range	Discharge: -20°C~60°C Charge: 0°C~50°C Storage: -20°C~60°C
Normal Operating Temperature Range	25°C ±5°C
Self Discharge	RITAR Valve Regulated Lead Acid (VRLA) batteries can be stored for up to 6 months at 25°C and then recharging is recommended. Monthly Self-discharge ratio is less than 3% at 25°C. Please charged batteries before using.
Container Material	A.B.S. UL94-HB, UL94-V0 Optional.

Dimensions



Constant Current Discharge Characteristics : A(25°C)

F.V/Time	10MIN	15MIN	30MIN	1HR	2HR	3HR	4HR	5HR	8HR	10HR	20HR
1.60V	365.1	290.8	168.6	104.6	63.3	47.1	37.7	31.7	21.7	18.4	9.35
1.65V	353.0	282.1	165.0	102.6	62.2	46.4	37.1	31.3	21.4	18.2	9.27
1.70V	337.1	270.6	160.4	100.0	60.7	45.5	36.5	30.8	21.1	17.9	9.16
1.75V	315.8	255.3	154.0	96.4	58.8	44.1	35.5	30.1	20.7	17.6	9.00
1.80V	287.4	234.6	145.3	91.5	56.1	42.3	34.2	29.1	20.0	17.1	8.78
1.85V	248.6	206.1	132.9	84.5	52.2	39.7	32.3	27.6	19.1	16.4	8.46

Constant Power Discharge Characteristics : WPC(25°C)

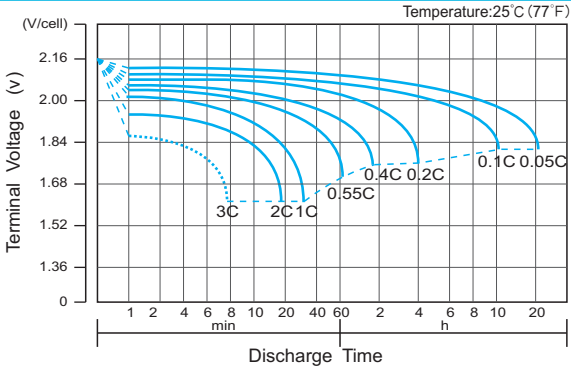
F.V/Time	10MIN	15MIN	30MIN	1HR	2HR	3HR	4HR	5HR	8HR	10HR	20HR
1.60V	653.3	535.1	322.3	205.8	126.2	94.8	76.1	64.4	44.5	38.0	19.4
1.65V	648.3	530.0	320.2	204.0	124.9	93.9	75.5	63.9	44.2	37.7	19.2
1.70V	626.1	513.0	312.9	199.5	122.5	92.2	74.2	63.0	43.6	37.2	19.0
1.75V	597.2	490.9	303.6	193.4	119.1	89.9	72.6	61.7	42.7	36.5	18.7
1.80V	552.9	457.5	289.3	184.4	114.2	86.5	70.1	59.9	41.5	35.6	18.3
1.85V	486.8	407.6	267.3	171.5	106.9	81.5	66.5	57.1	39.8	34.2	17.6

(Note) The above characteristics data are average values obtained within three charge/discharge cycle not the minimum values.

DC6-180(6V180Ah)



Discharge Characteristics Curve



Charge Characteristic Curve for Cycle Use(IU)



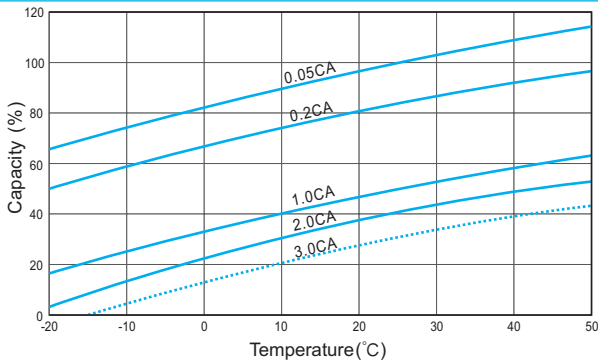
Cycle Life in Relation to Depth of Discharge



Relationship Between Charging Voltage and Temperature



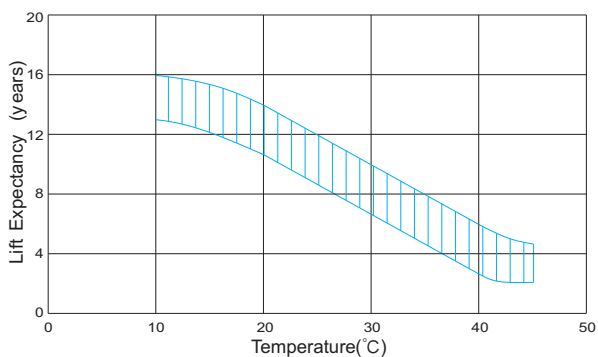
Temperature Effects on Capacity



Storage Characteristics



Effect of Temperature on Long Term Life



Relationship of OCV And State of Charge(20°C)



(Note) All above information shall be changed without prior notice, Ritar reserves the right to explain and update the latest information.